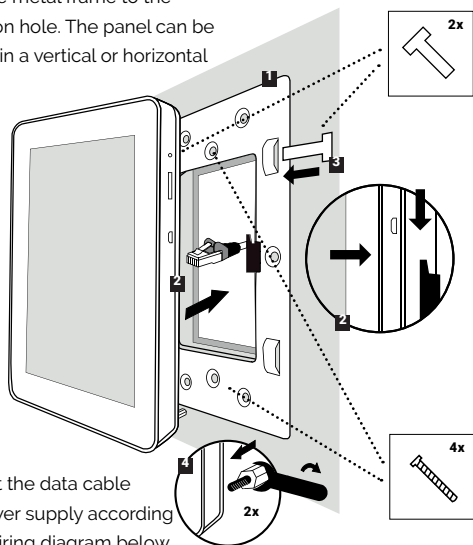


## Mounting

- 1 Screw the metal frame to the installation hole. The panel can be installed in a vertical or horizontal position.



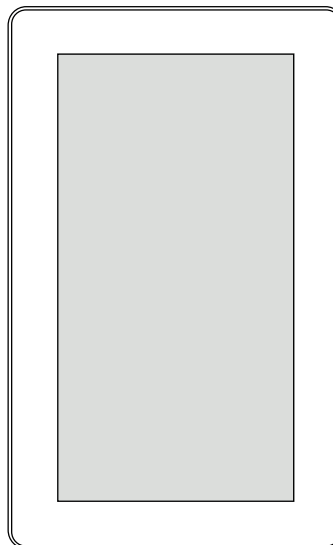
- 2 Connect the data cable and power supply according to the wiring diagram below. Place the touch panel in the holder.

- 3 Secure the panel against unintentional removal with the locking stops.

- 4 If necessary, anchor the position of the panel using the supplied spacer screws.



## Installation guide

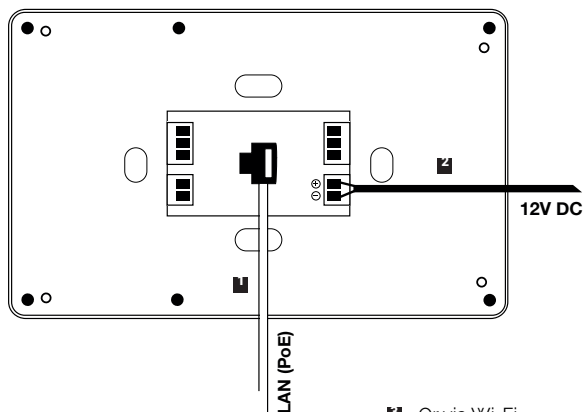


# Touch-50-A7

## Connection



- 1 Connect the data cable. Power supply can be done via a data cable using **PoE 802.3** af technology.
- 2 If PoE technology is not available, the touch panel can be powered using the included adapter. Connect the 12V DC supply voltage to the terminals marked + and -.



- 3 Or via Wi-Fi interface.



### SAFECONTROL s. r. o.

Vaničkova 315/7  
169 00 Praha 6  
IČO: 02084287  
DIČ: CZ02084287



support@safecontrol.cz  
www.safecontrol.cz

#### Information for users on the disposal of electrical and electronic equipment (corporate and enterprise use)

For proper disposal of electrical and electronic equipment, request detailed information from your dealer or suppliers.

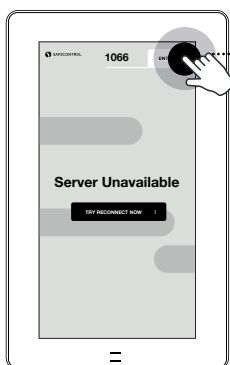
#### Information for users on the disposal of electrical and electronic equipment in other countries outside the European Union

The below symbol is only valid in the countries of the European Union. For proper disposal of electrical and For detailed information, contact your local authorities or equipment retailer.

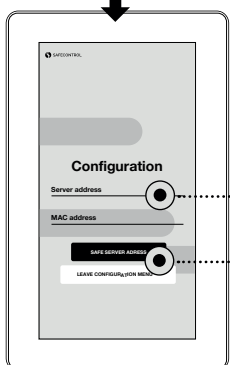


Made in Czech Republic

## Home page settings



Click here and enter the pin code "1066".

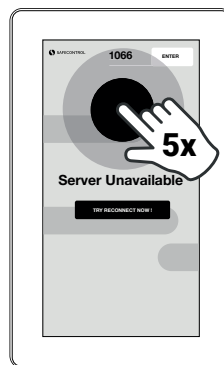


Set the target address at the format below: `http(s)://192.168.10.250/display`.

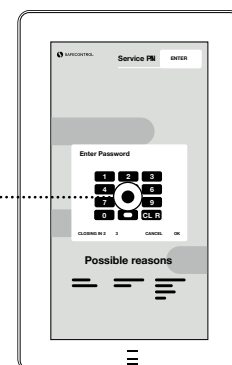
Select `http` or `https` according to the server. If you use it in conjunction with the SAFECONTROL WEBserver, write after the address/display for registration to automatically log in.

Press the button to save the settings and exit this menu. By pressing reconnect buttons to verify server availability. If the server is still not available, check the network connection and hardware settings.

## Entrance to the service menu

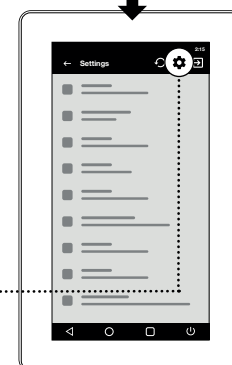


To enter the service menu, tap the display 5-times in quick succession. The window for entering the PIN code will appear "1066".



You have now entered the service menu of the tablet and kiosk application. We recommend that you do not change the default kiosk application settings without consulting with technical support. Undesirable changes can cause the touch panel malfunction.

Press the gear symbol in the upper right corner to configure the network interface.



## Hardware settings



The most important configuration in hardware settings is the network interface. The default Ethernet port setting is DHCP Client. If a DHCP server is not available on the network, it is necessary to set a static IP address, gateway, etc.

Additional hardware parameters can be set in other parts of the menu (e.g., time or time zone).

The touch panel can also be connected via WiFi. In this case, go to the touch panel settings in order to activate WiFi, select SSID and enter the network key.

The recommended connection is via Ethernet. Static IP settings is showed on the next page of this manual.



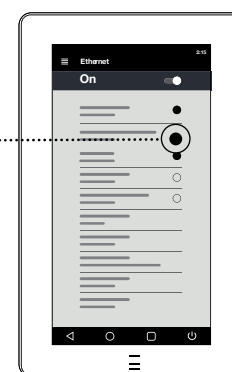
Contact for further settings and troubleshooting technical support at: [support@safecontrol.cz](mailto:support@safecontrol.cz)

**If you are interested, you can sign up for training or watch tutorial videos on the YouTube channel SAFECONTROL.**

## IP Address Settings



Default DHCP client settings switch to "Static IP".



A configuration window will appear, where all setting parameters must be filled in correctly

Fill in the touch panel's IP address, mask, gateway, DNS server and save the settings.

To exit the service menu, click on the "exit" button on the right the top corner of the application.

Then confirm that you should always start the SAFECONTROL kiosk application.

