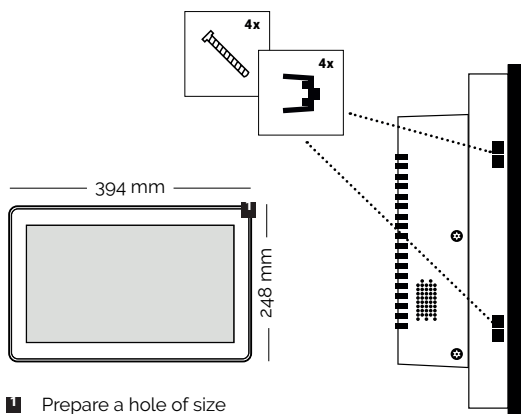
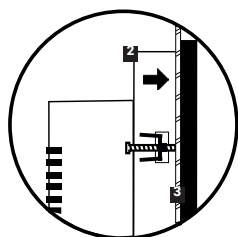


Mounting



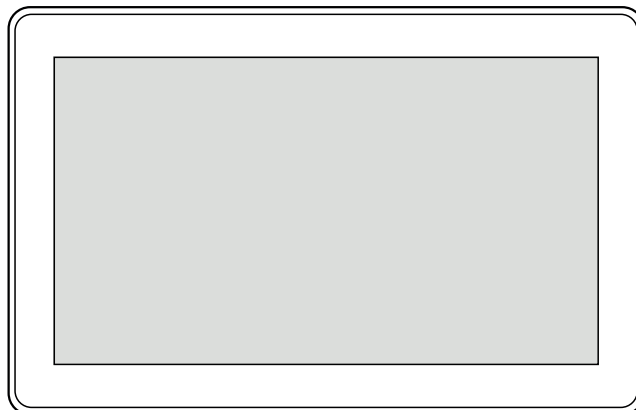
- 1 Prepare a hole of size 394 x 248 mm.



- 2 Secure the panel with screws and struts.
- 3 Panel with a sheet thickness of max. 2.5 mm.

1

Installation guide

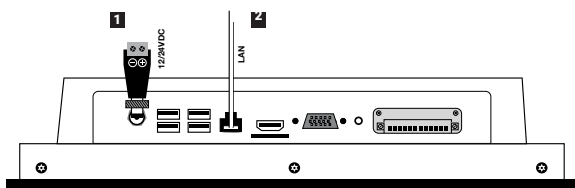


Touch-156-L WEBserver-20-HMI-15

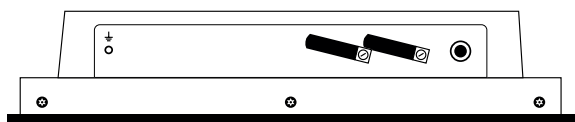
Connection



- 1 Connect the power supply to the panel using the supplied DC connector.



- 2 Connect the Ethernet cable to ETH port.



SAFECONTROL s. r. o.

Vaničkova 315/7
169 00 Praha 6
IČO: 02084287
DIČ: CZ02084287



support@safecontrol.cz
www.safecontrol.cz

Information for users on the disposal of electrical and electronic equipment (corporate and enterprise use)

For proper disposal of electrical and electronic equipment, request detailed information from your dealer or suppliers.

Information for users on the disposal of electrical and electronic equipment in other countries outside the European Union

The below symbol is only valid in the countries of the European Union. For proper disposal of electrical and For detailed information, contact your local authorities or equipment retailer.



Made in Czech Republic

Device settings



To work with WEBserver, you need to have the current version of Google Chrome installed.

1. Set the IP address from the range 192.168.1.0/24 on the PC network interface, e.g. 192.168.1.101.
2. Open Google Chrome and enter the URL **192.168.1.250**.
3. Enter the credentials: user **admin**, password **admin**.
4. After logging in, it is necessary to agree to the license conditions and confirm them by changing the password.

Setting a new IP address:

1. Go to the Hardware settings page.
2. In the Network settings section, click Edit.
3. Use the figure to select the correct network topology.
4. Fill in the required network parameters.
5. Click Save.
6. Edit the IP address on the network interface of your PC to the new range.
7. Change the URL in the browser to the new IP address of WEBserver.

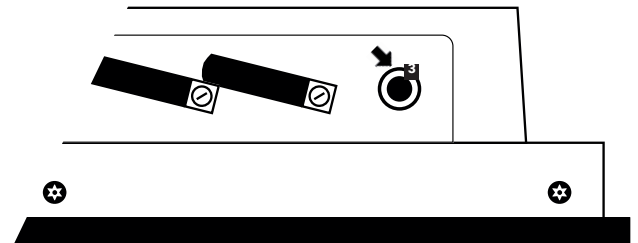
Reset the device to default parameters



The device has the following default settings:

- IP address on LAN port **192.168.1.250**, mask: **255.255.255.0**
 - Username: **admin**
 - Password: **admin**
1. Connect the device to the power supply.
 2. Wait for the device to start up safely (2–3 minutes).
 3. Using a plastic tool, quickly press the reset button 5 times. Maximum within 3 s. **3**
 4. The device is set to the default settings.
 5. If everything went well, the device should not turn itself off.

Note: The process of setting the default settings is performed only by setting up the network settings and the admin user. No data or other settings will be deleted from the device by this process.



LTE



To connect via LTE/GSM networks, it is necessary to connect the LTE modem to the USB port. See the online documentation for supported LTE modems.

1. Make sure the PIN code protection is turned off on the SIM card.
2. Connect the LTE modem with the inserted SIM card to the USB port.
3. No further settings are required, the system automatically adjusts the network configuration.
4. In the Hardware settings section, check the connection status and signal strength..

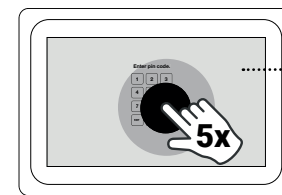
WiFi



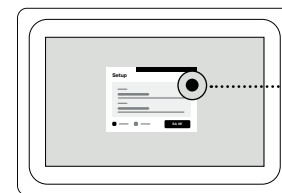
To connect via WiFi.

1. Go to the Hardware settings section.
2. In the Network settings section, click Edit.
3. Enable WiFi at the bottom.
4. Save the network settings.
5. Click Edit Network Parameters again.
6. Enter the SSID and password or click to Find WiFi network. Click on the found network and enter the password.
7. Save network settings.
8. Check connection status and signal strength.

Home page settings



Click here and enter the pin code **"1066"**.



Set the target address at the format below: [http\(s\)://192.168.10.250/display](http://192.168.10.250/display).

Select *http* or *https* according to the server. If you use it in conjunction with the **SAFECONTROL WEBserver**, write after the address/*display* for registration to automatically log in.

Press the button to save the settings and exit this menu. By pressing reconnect buttons to verify server availability. If the server is still not available, check the network connection and hardware settings.